



S2USB485

USB to RS-485 and RS-232 Converter

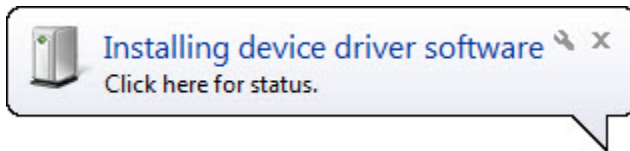
Introduction

The S2USB485 is a USB to full-duplex RS-232 and half-duplex RS-485 serial converter integrated into a single device. In essence the S2USB485 is a single USB serial port that has two electrical interfaces available to it (RS-232 and RS-485).

Installation under Windows 7 is not as straight forwards as previous Windows operating systems, as the “Found New Hardware” wizard only searches the Microsoft Windows site for drivers. Consequently, you must install the drivers manually through Device Manager and so this document walks you through this procedure.

Installation Procedure

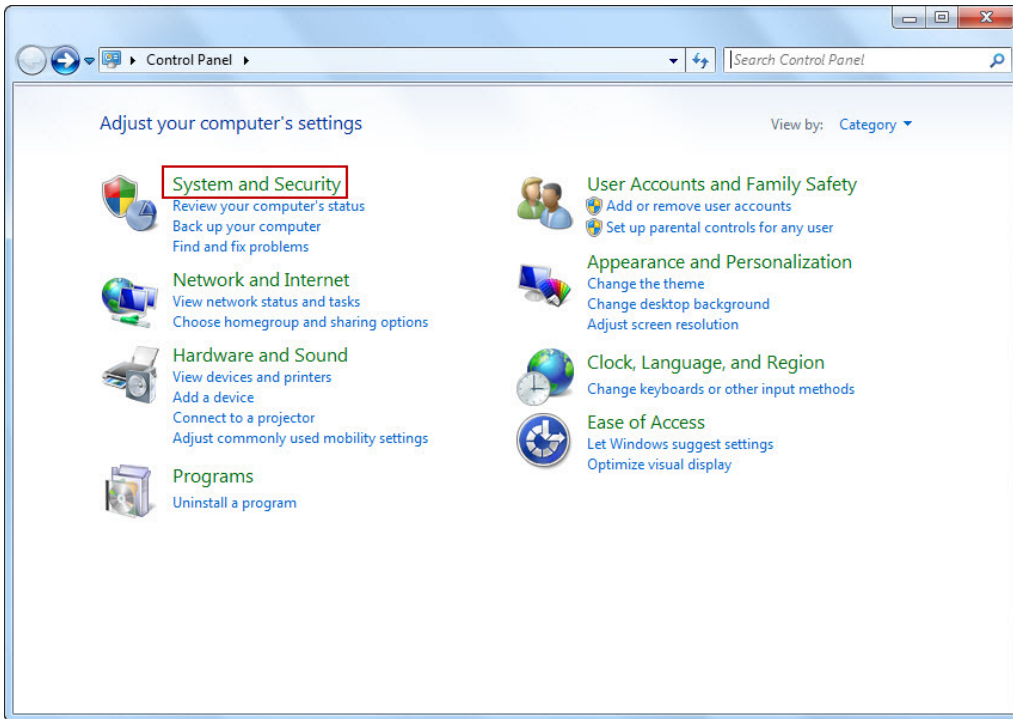
1. Connect the S2USB485 to the computer’s USB port
2. If this is a first time installation, the following Message will appear along the task bar:



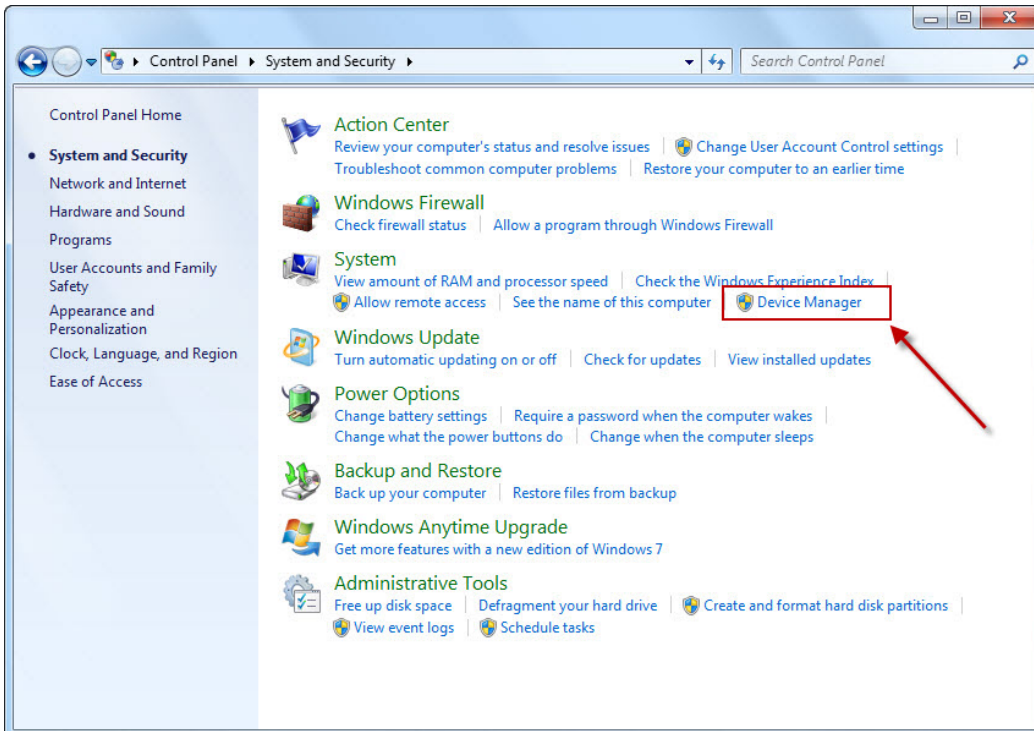
next, the following message will also appear



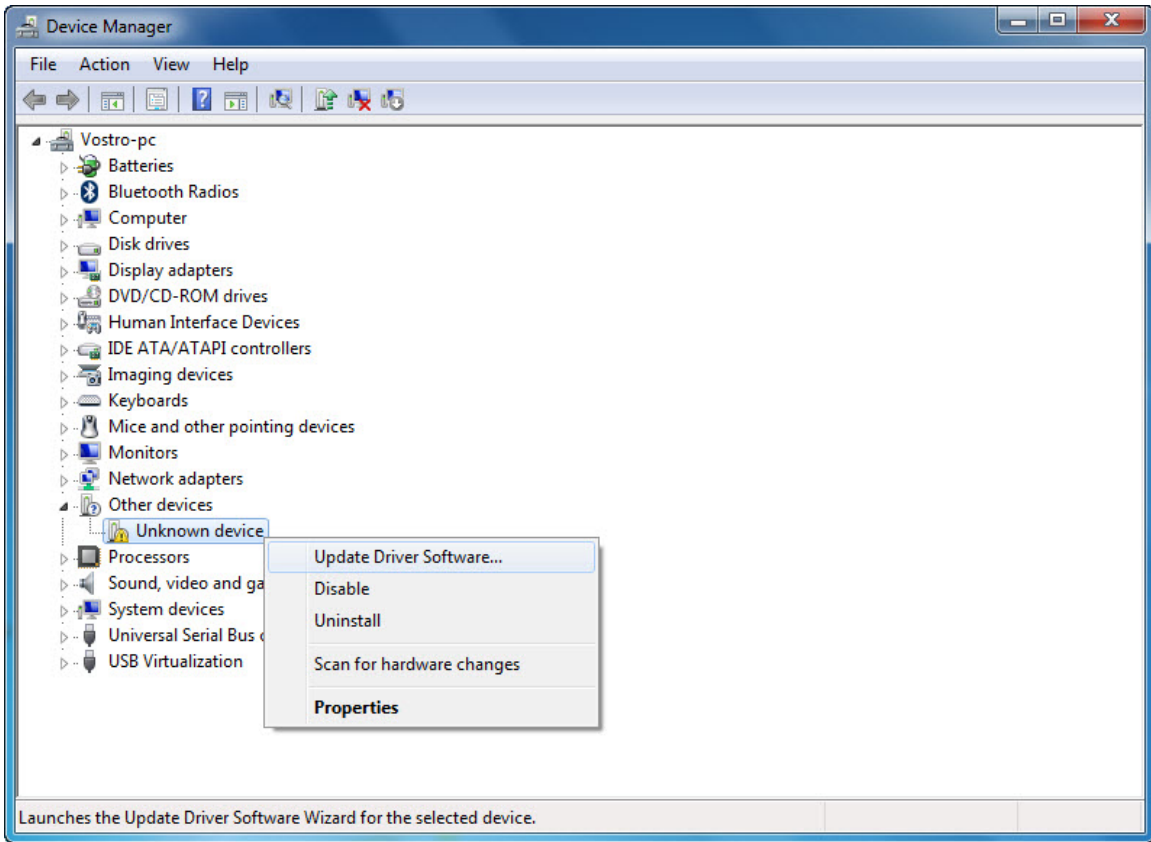
Once these messages disappear, you must navigate to Device Manager. There are several approaches to do this. The first approach is to go to “Start-Control Panel”



Now, select the “System and Security Item” to go to the next screen

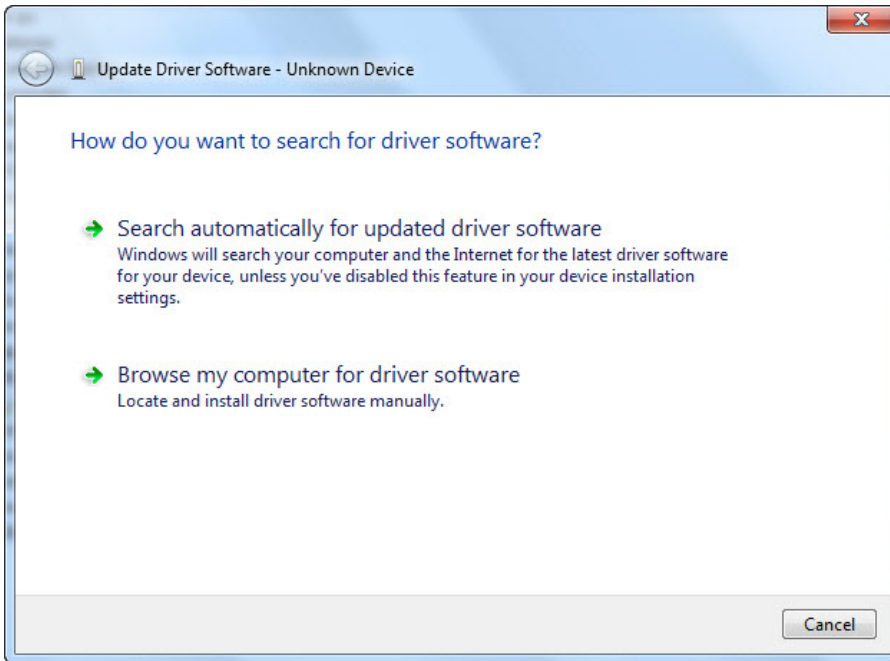


Select the “Device Manager” selection to reveal the Device Manager Window

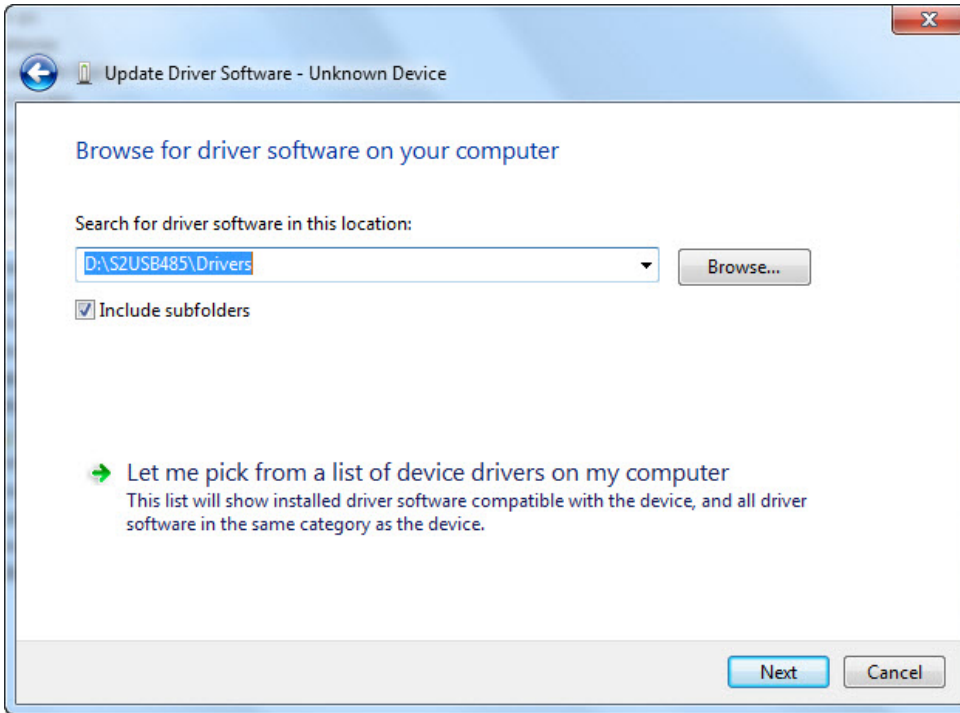


3. Now, Select the “Unknown device” item (single left mouse-click), then right mouse-click to display the item’s selections.

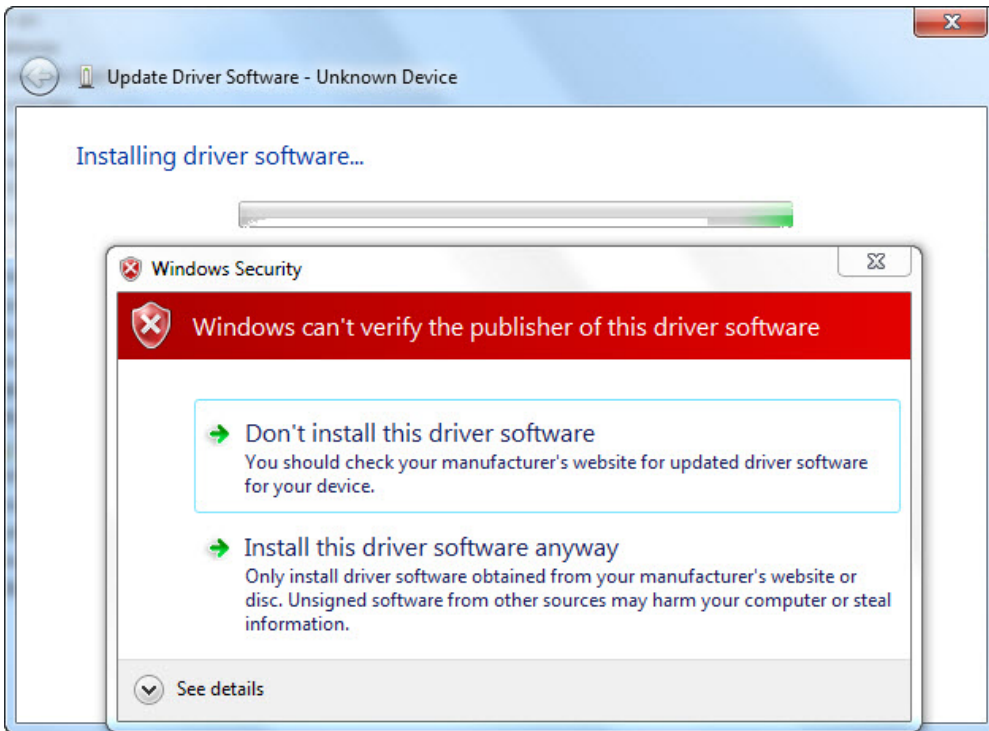
4. Select the “Update Driver Software” Selection



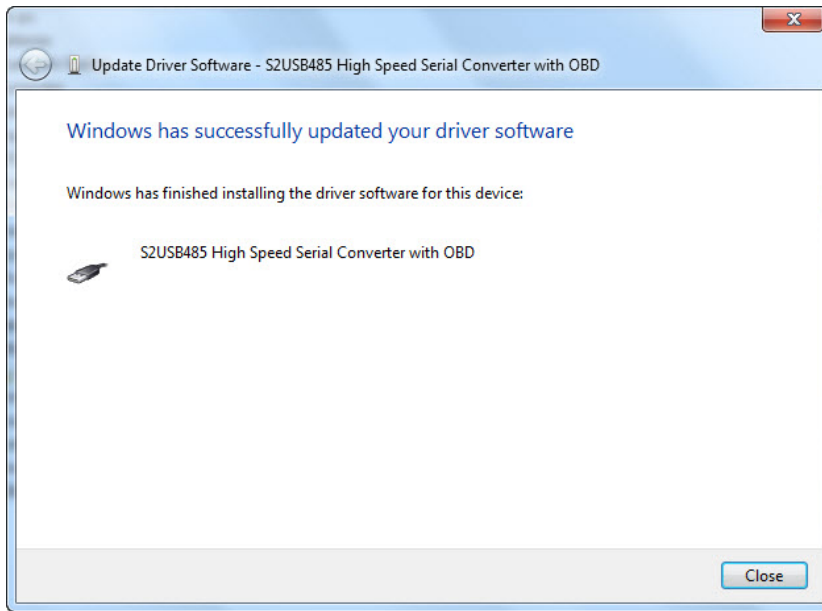
5. Now, Choose the “Browse my Computer for driver software” selection



6. Insert the supplied “S2USB485 Drivers CD” and enter the path to the drivers in the text field. The path will be “CD Drive>:\S2USB485\Drivers” (see above). After you are finished, press next



7. Choose the “Install this driver software anyway” selection



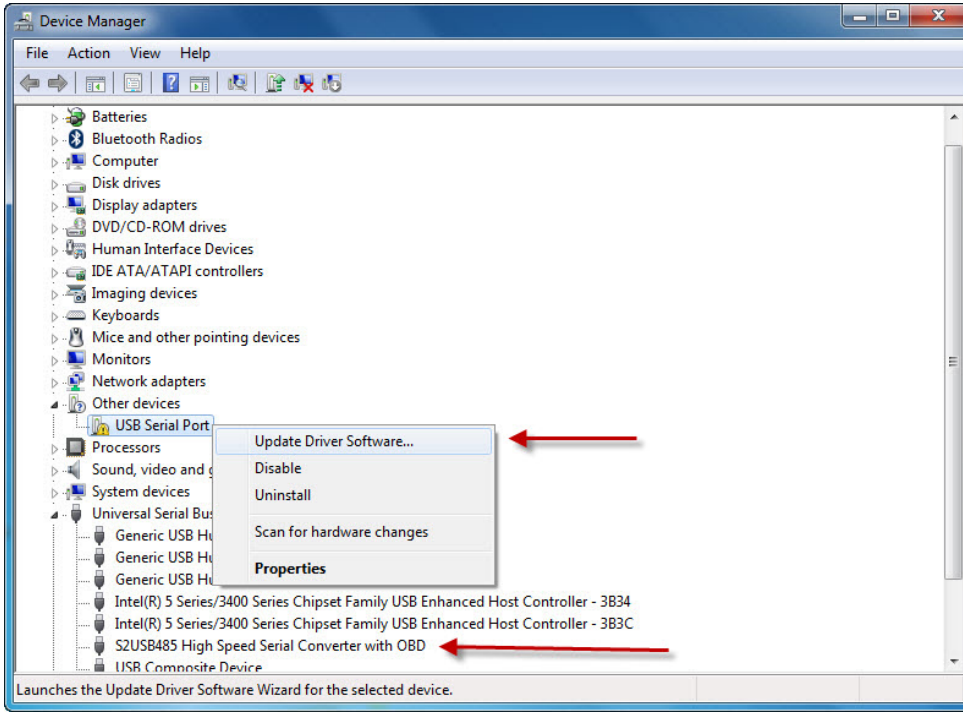
8. Now press “Close” and the following message will occur which really pertains to the 2nd driver that must be installed.



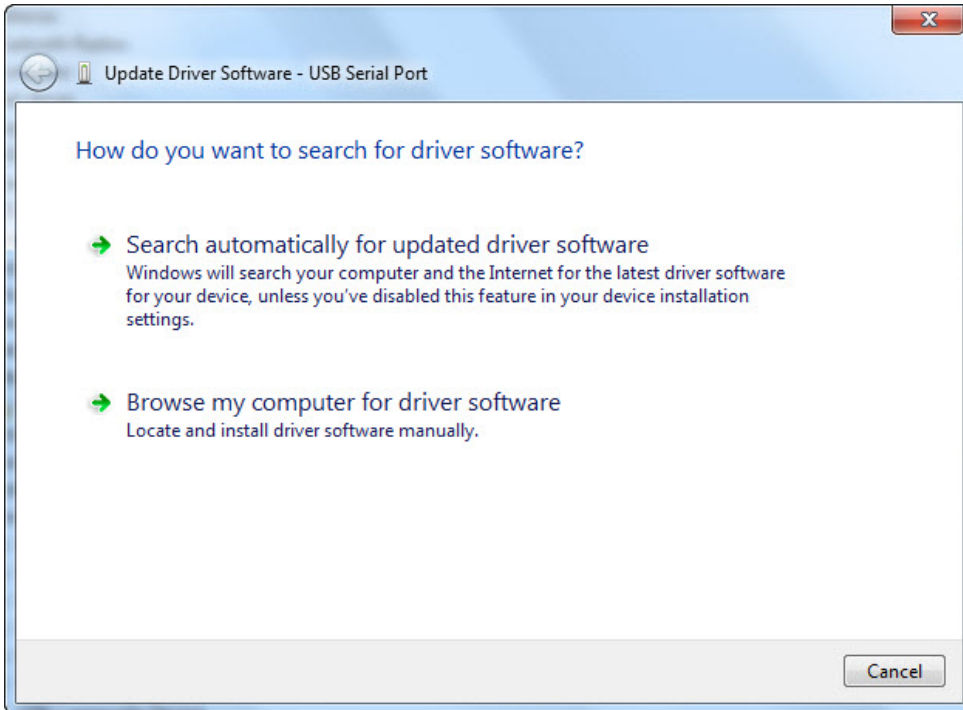
9. At this point if you look at device manager you should see the “S2USB485 High Speed Serial Converter with OBD” listed under the “Universal Serial Bus Controllers” Entry (see next picture)

Installation of the 2nd or Virtual Serial Port Driver

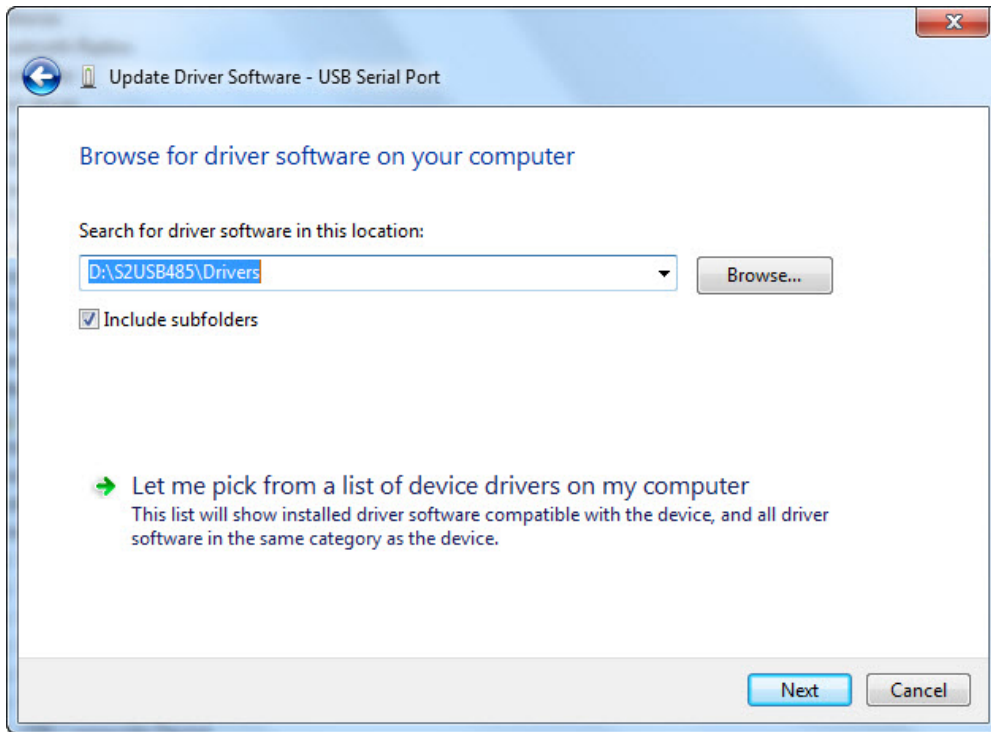
10. Returning to the Device Manager window, you will find a “USB Serial Port” entry under the “Other Devices” entry. Selecting this item and right mouse-clicking will display its selections.



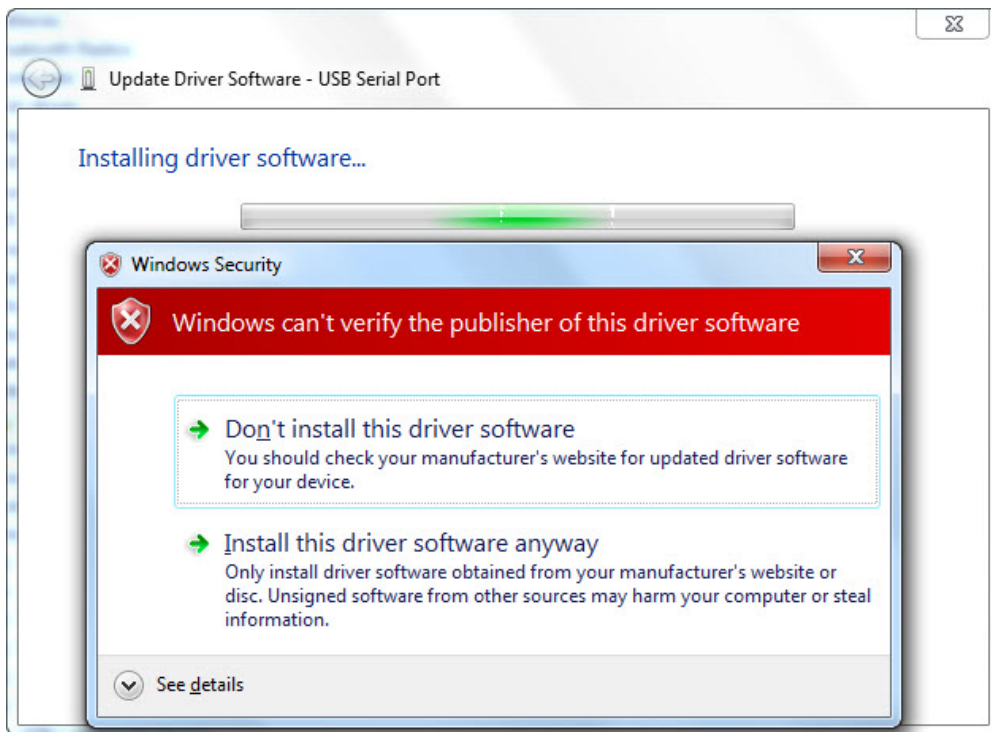
11. Choosing the “Update Driver Software” selection reveals:



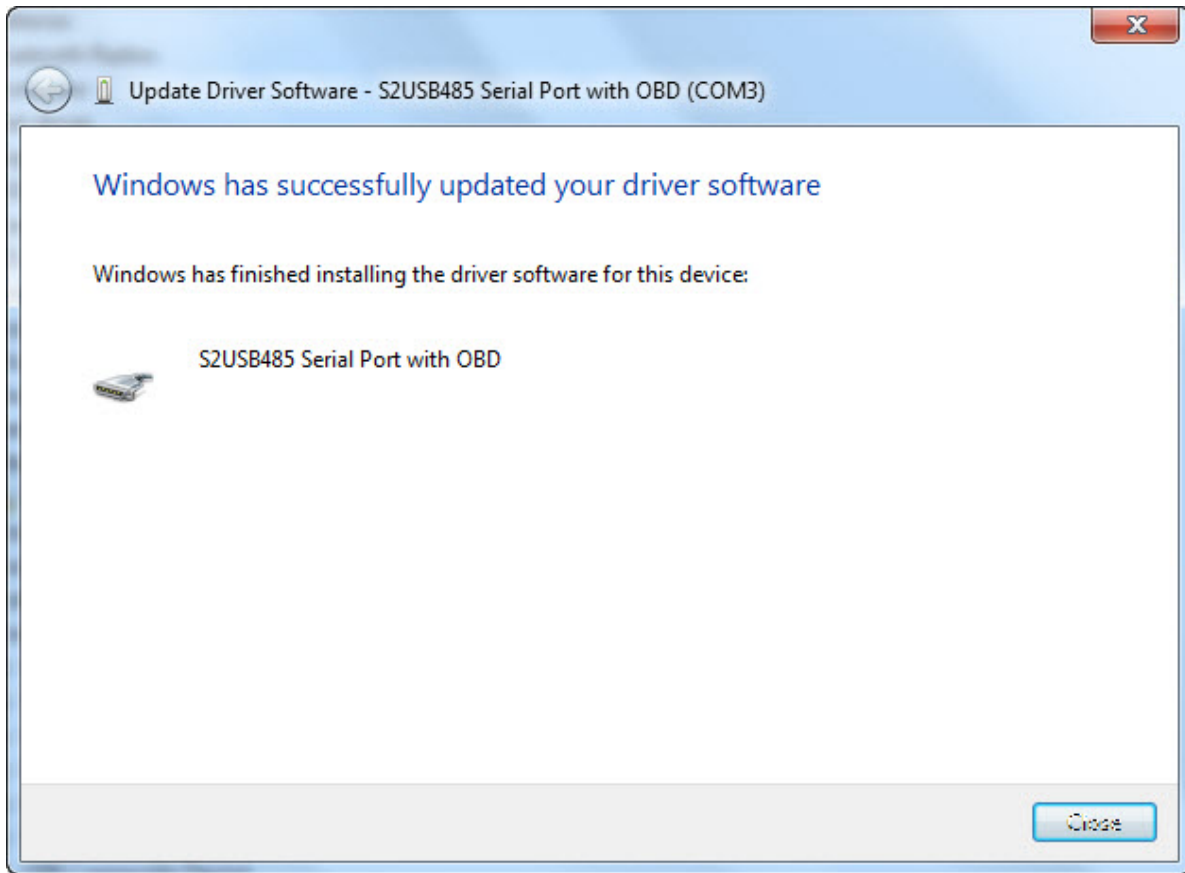
12. Choose the “Browse my computer for driver software” reveals



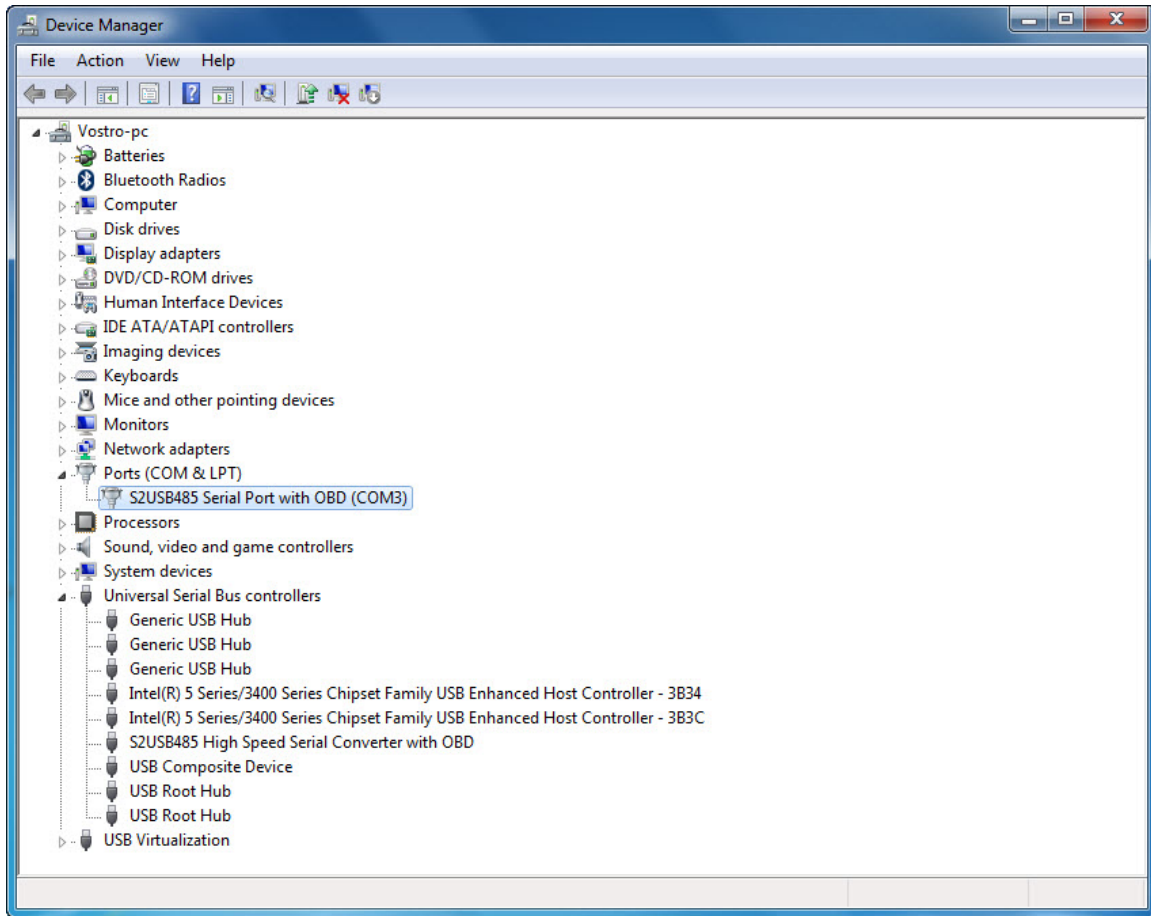
13. The supplied “S2USB485 Drivers CD” should still be in your CD/DVD drive and Windows should remember the path. If not, then type “CD Drive>:\S2USB485\Drivers” (see above) in the path and press next.



14. Choose the “Install this driver software anyway” selection



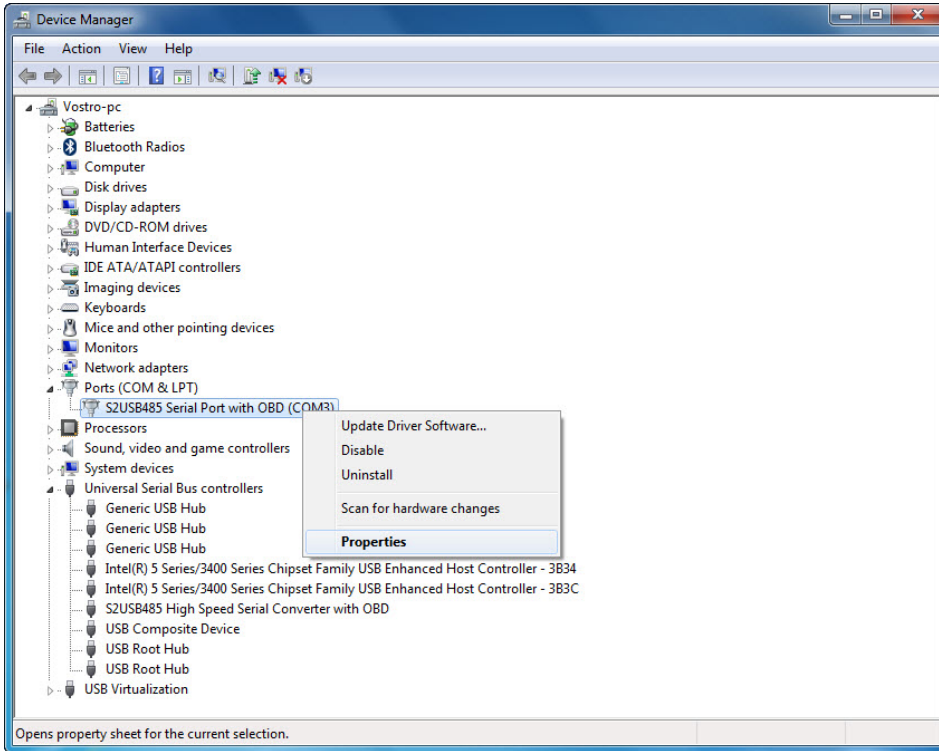
15. Pressing “Close” will finish the driver installation. Looking at Device Manager should reveal the S2USB485 device installed under the “Ports” entry



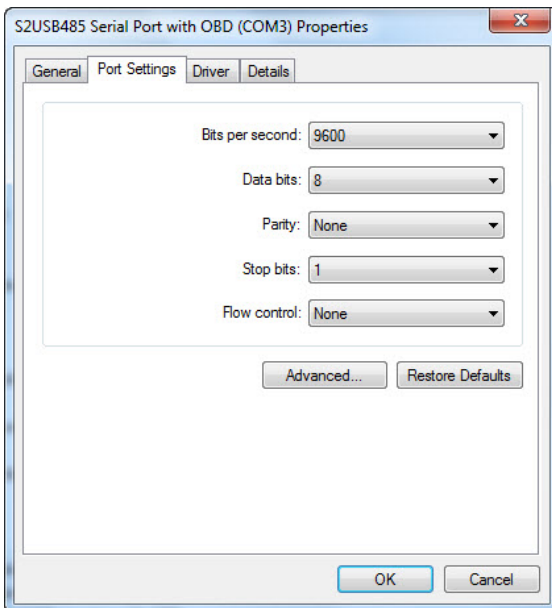
16. Your Driver Installation is now complete, however, you may need to change the installed COM port setting for the application you are planning on using. For JCI HVACPro users, the COM port must be either COM 1 or COM2, as this software will only allow communication on either of these two ports. If you need to change the S2USB485's COM port then go to the next section.

Changing the Default Serial Port used by the S2USB485 Device

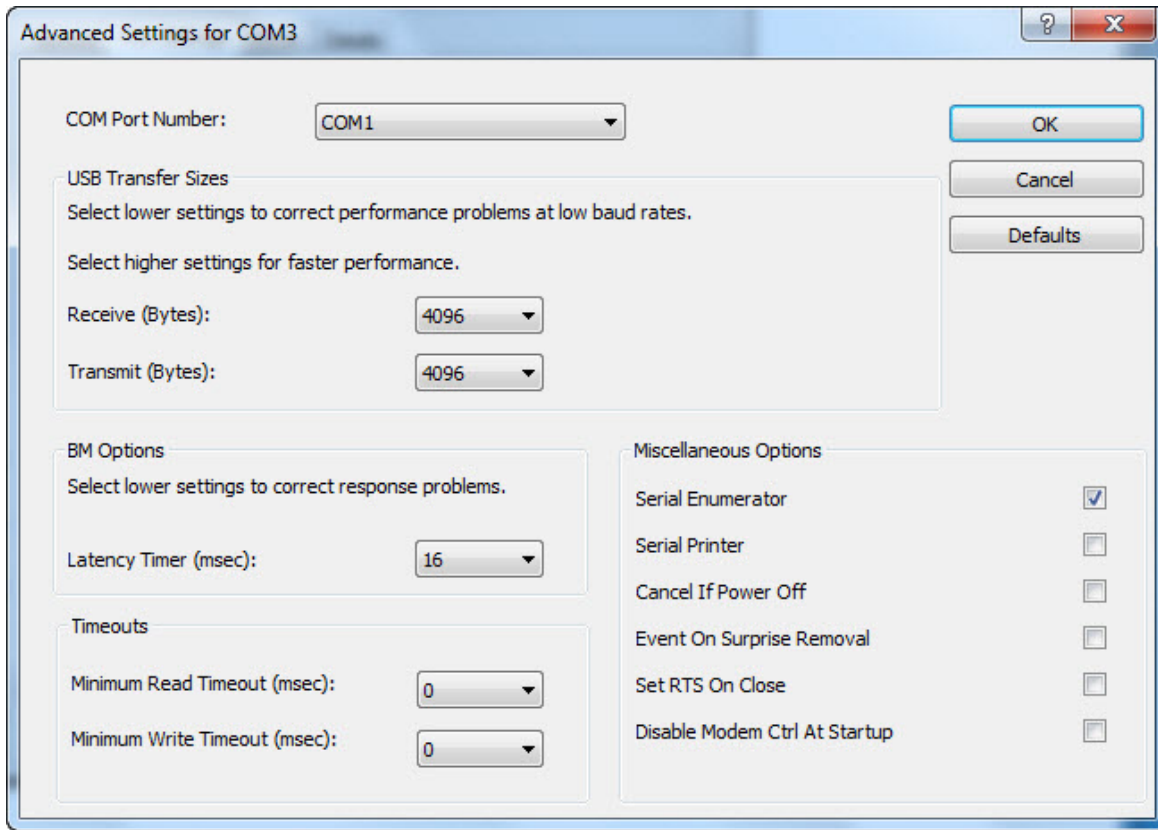
1. From device manager, select the “S2USB485 Serial Port with OBD” (or “S2USB485 Serial Port”) entry from the “Ports (COM & LPT)” entry.



2. Select the “Properties” item to reveal the “Properties” Window. Now select the “Port Settings” Tab to reveal:

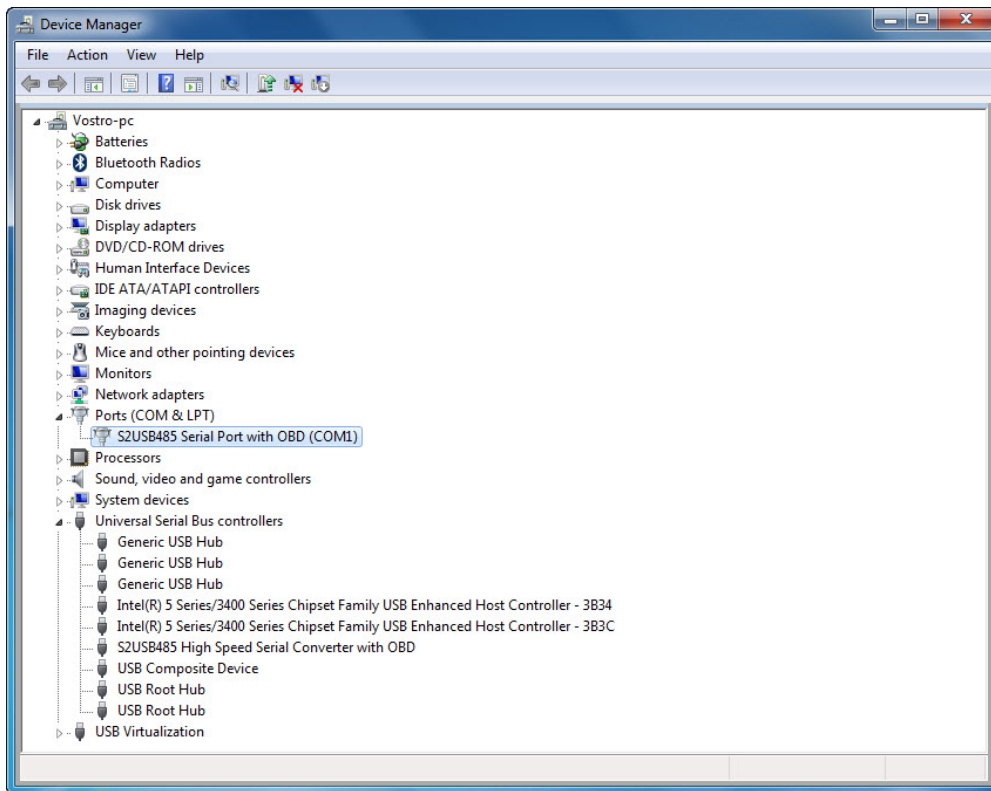


3. Select the “Advanced Button”



Now, using the drop down list select a valid COM port from the list. Ideally, the desired COM port will not say “In Use”, as this is a message from Windows that either the COM port is currently in use by another application or was used by an application. If you are unsure, select the port anyway.

4. Press the “Ok” button to return back the properties window, then press “OK” again to return the Device Manager. Selecting the “Action-Scan for Hardware Changes” menu selection will force Device Manager to update its screen with your new changes.



5. You are now done and your S2USB485 is ready to be used under Windows 7.