

S2UI28-N2S

Wall-Mount User Interface Terminal

JCI N2 Bus Slave Version

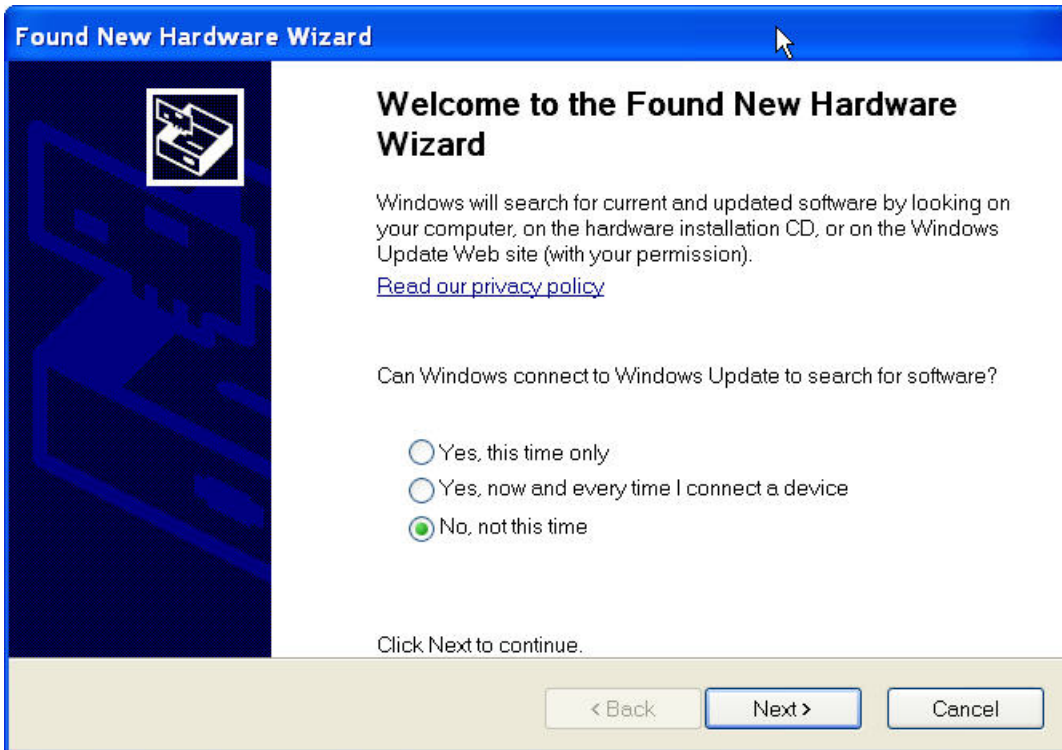
USB Serial Driver Installation

Introduction

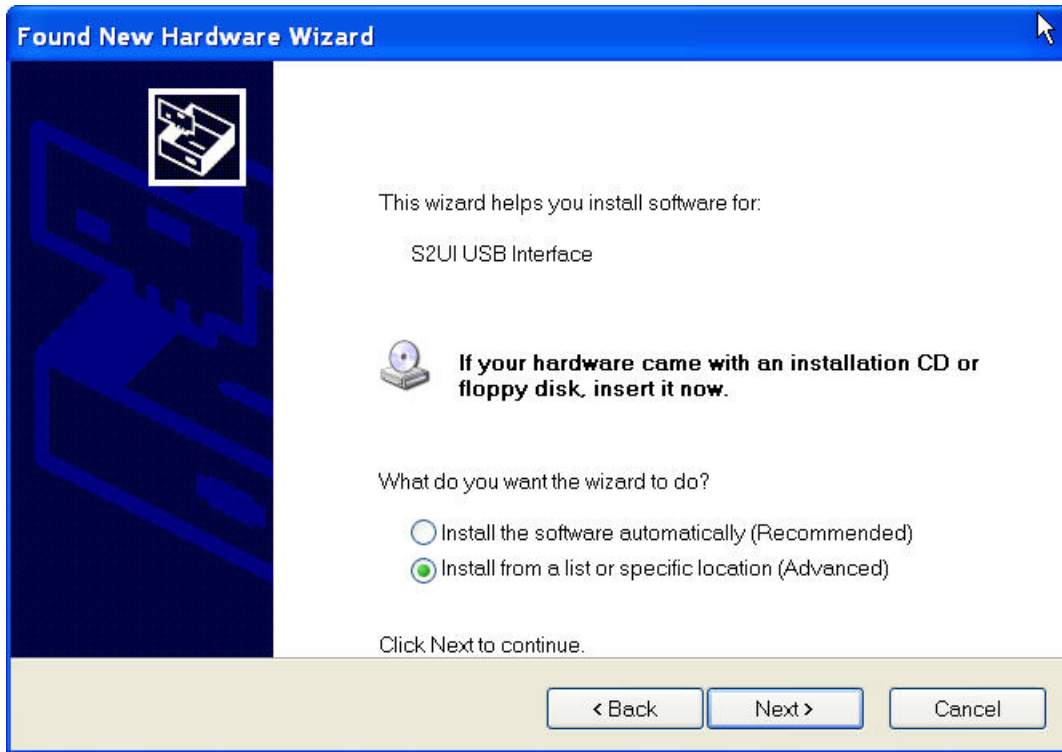
The S2UI28-N2S is a wall-mount User Interface terminal that provides information and interaction between the User and a JCI N2 Bus Building Management System's (BMS) Supervisory Controller (NAE, N30, NCM, FX 16/20/40/60, etc).

Installation Procedure

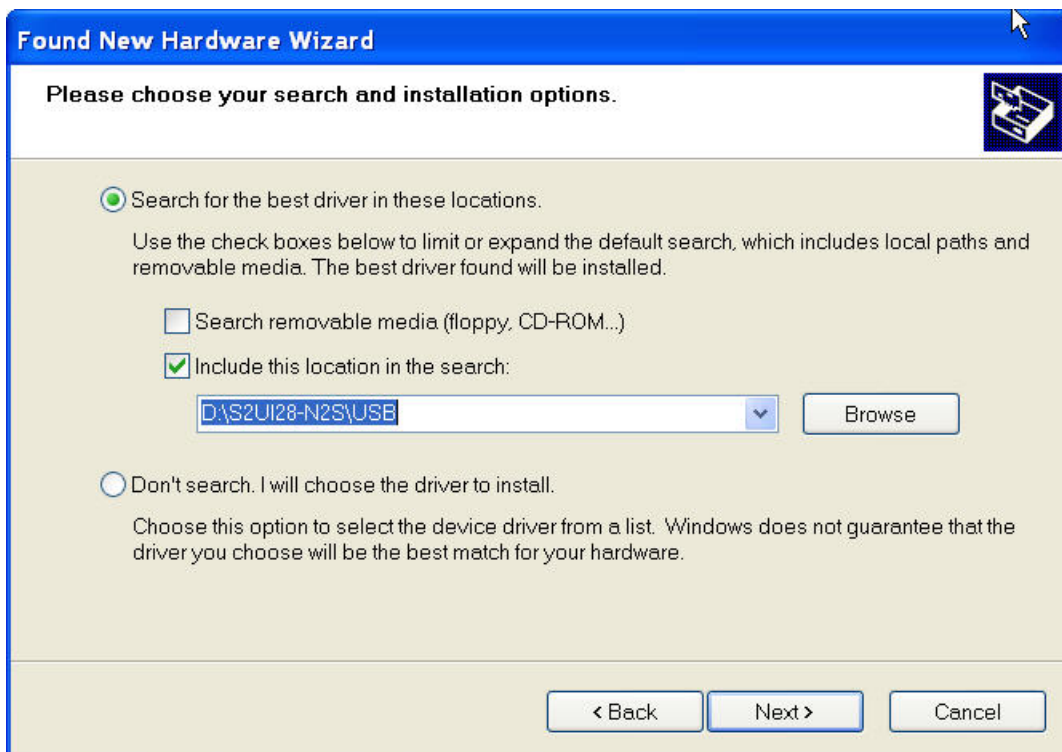
1. Connect the S2UI28-N2S to the computer's USB port
2. If this is a first time installation, the following Message will appear:



3. Select "No, not this time"

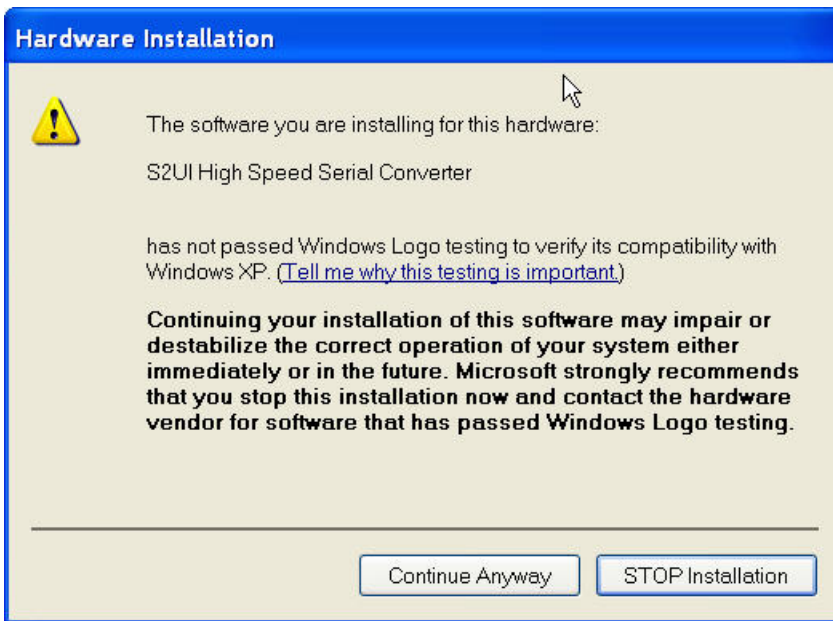
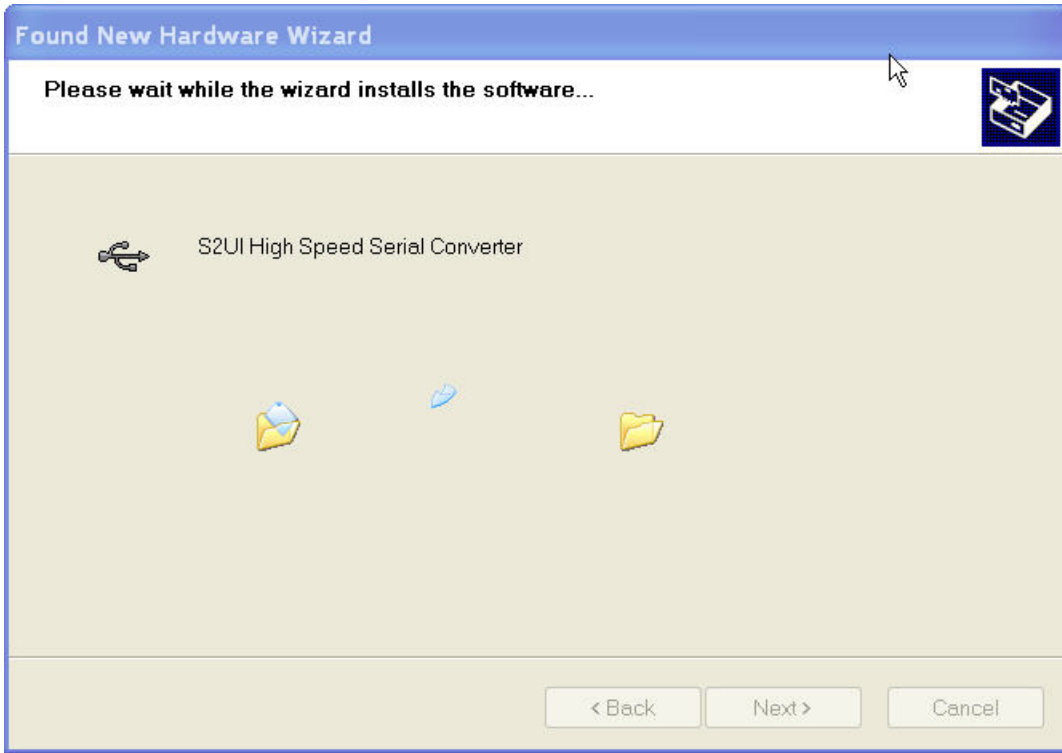


4. Select the “Install from a list or specific location” option and press next



5. Select the “Search for the best driver in these locations” option and check the “Include this location in the search” item. Now, insert the supplied “S2UI28-N2S Drivers CD” and enter the path to the drivers in

the text field. The path will be “CD Drive>:\S2UI28-N2S\USB” (see above). After you are finished, press next



6. Select “Continue Anyway”

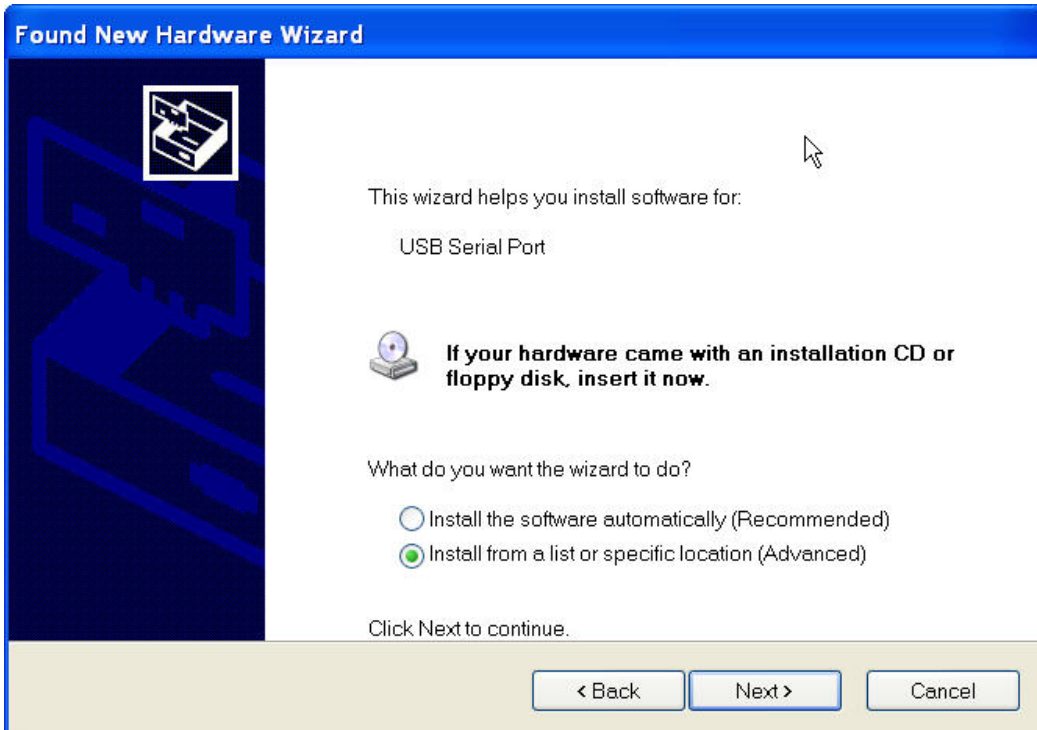


7. Pressing “Finish” will complete installation of the actual Hardware. Now, the virtual serial (COM) port used by the S2UI28-N2S will be installed.

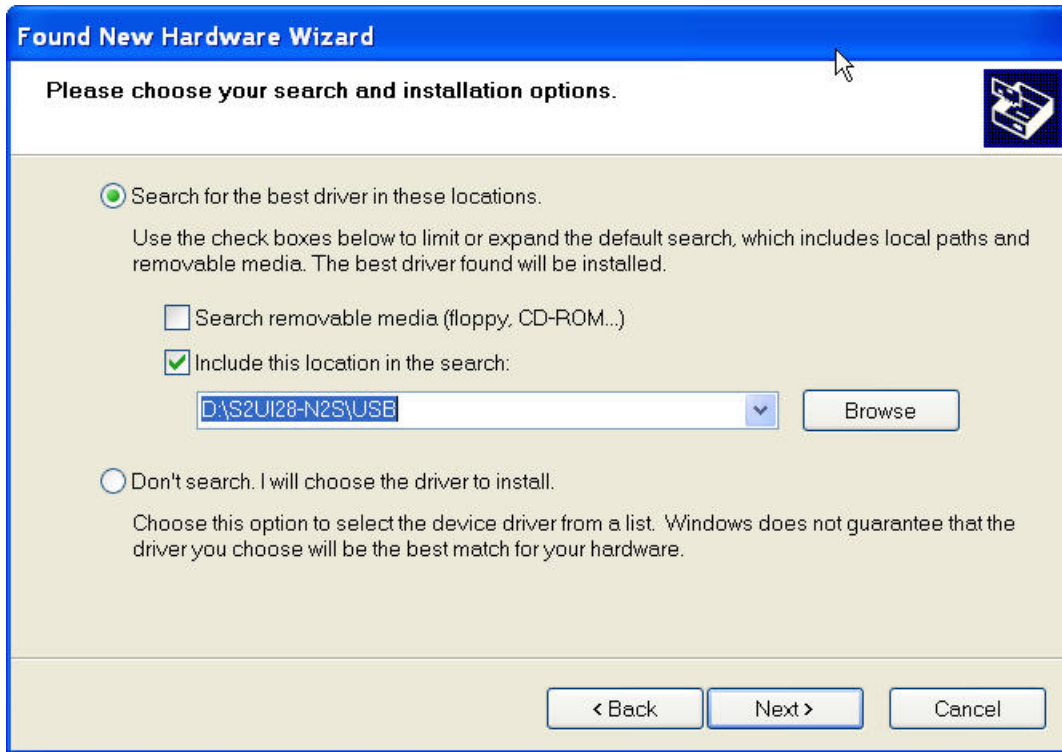
Installation of the Virtual serial (COM) port:



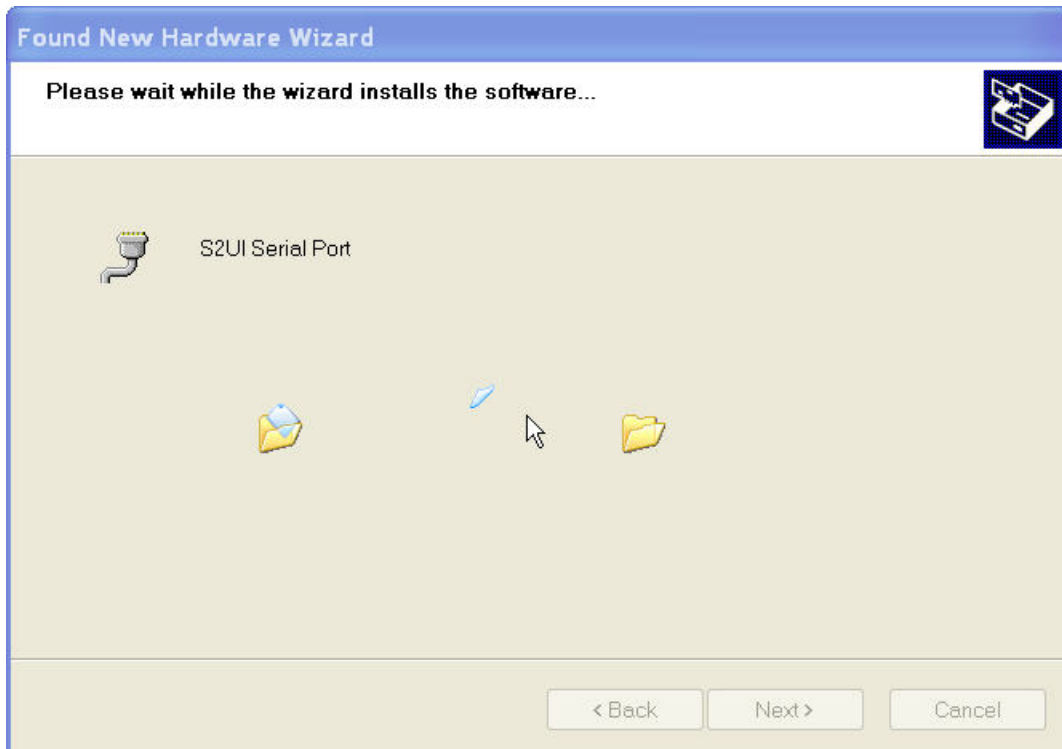
8. As before, select “No, not this time” option and press next

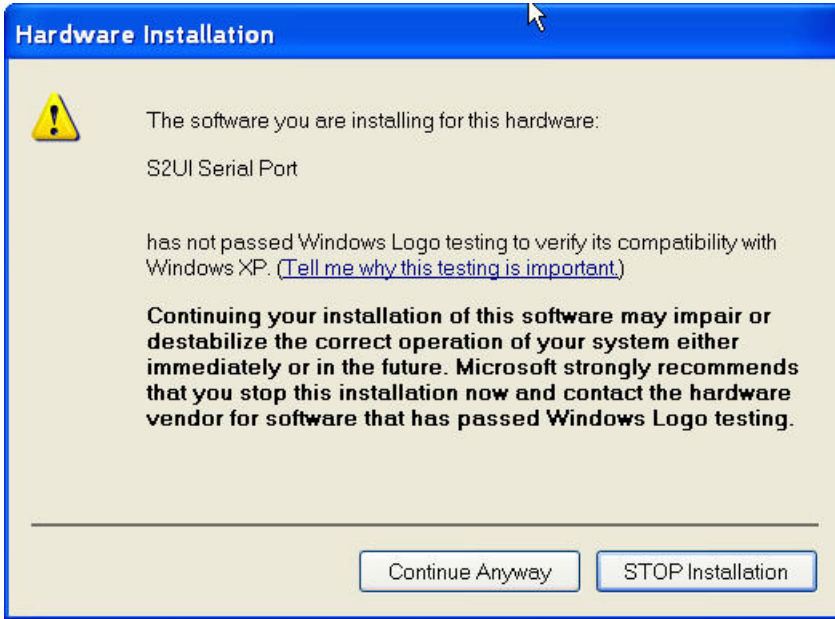


9. As before, select the “Install from a list or specific location” option and press next

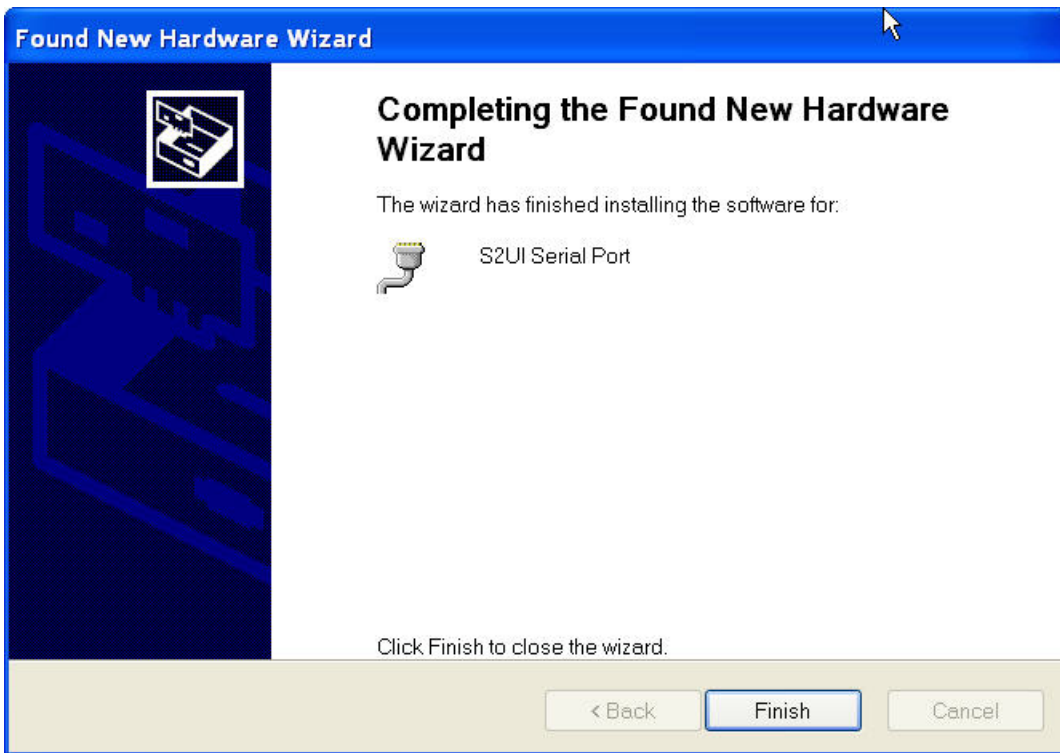


10. Select the “Search for the best driver in these locations” option and check the “Include this location in the search” item. Now, insert the supplied “S2UI28-N2S Drivers CD” and enter the path to the drivers in the text field. The path will be “CD Drive>:\S2UI28-N2S\USB” (see above). After you are finished, press next





11. Select "Continue Anyway"



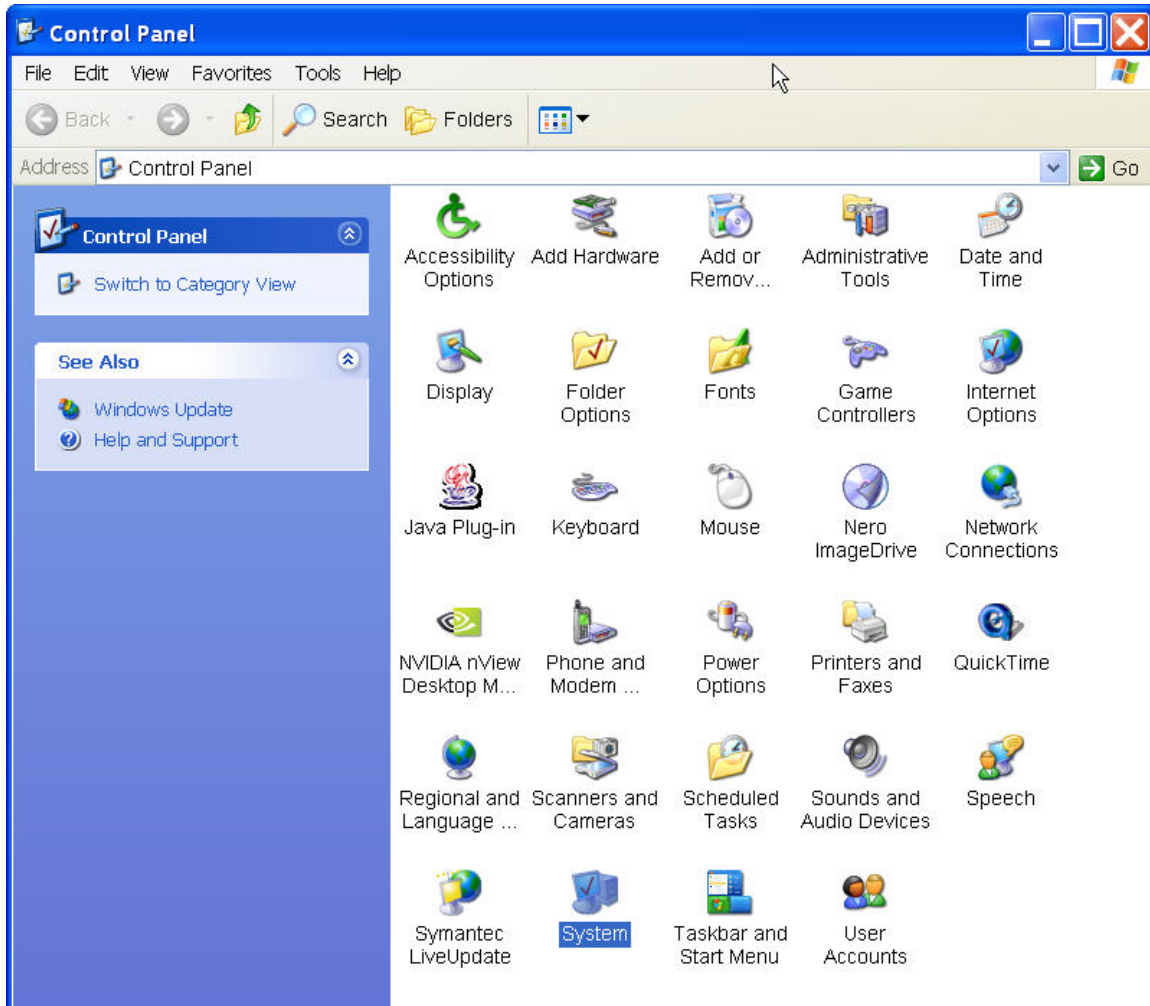
12. Pressing "Finish" will complete installation of the virtual serial (COM) port used by the S2UI28-N2S.

13. **Installation Complete.** The S2UI28-N2S Device is now ready to be used!

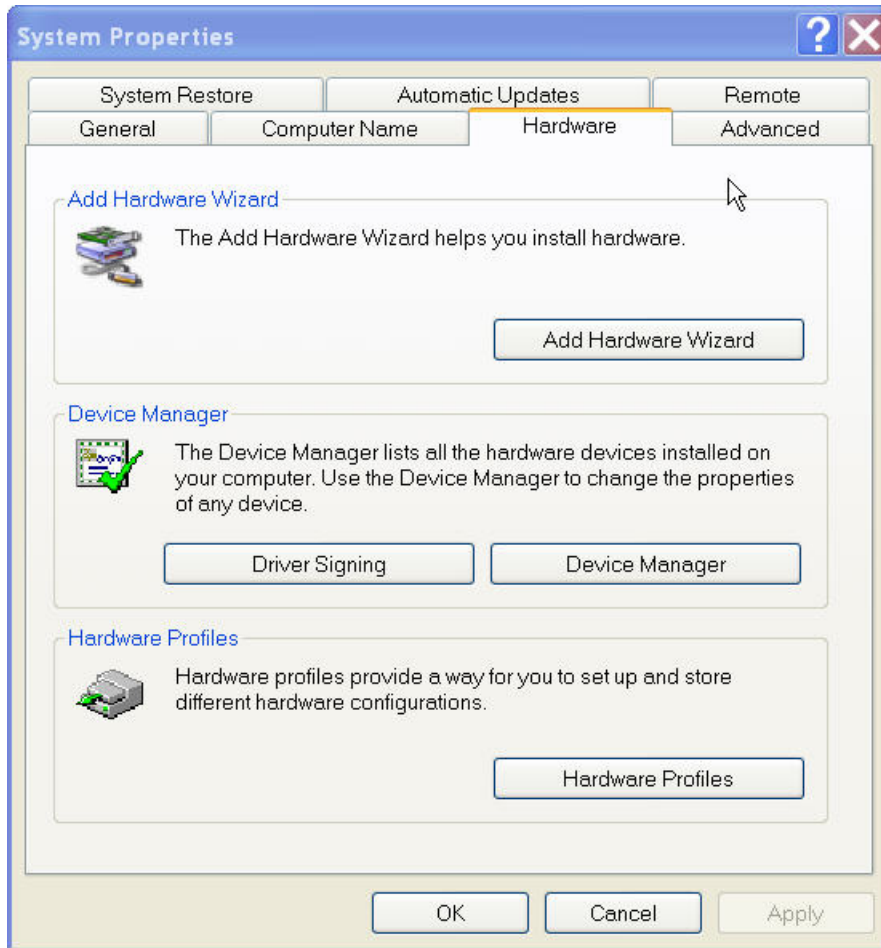
Changing the Default Serial Port used by the S2UI28-N2S Device

Changing the default serial port used by the S2UI28-N2S is done via the following procedure:

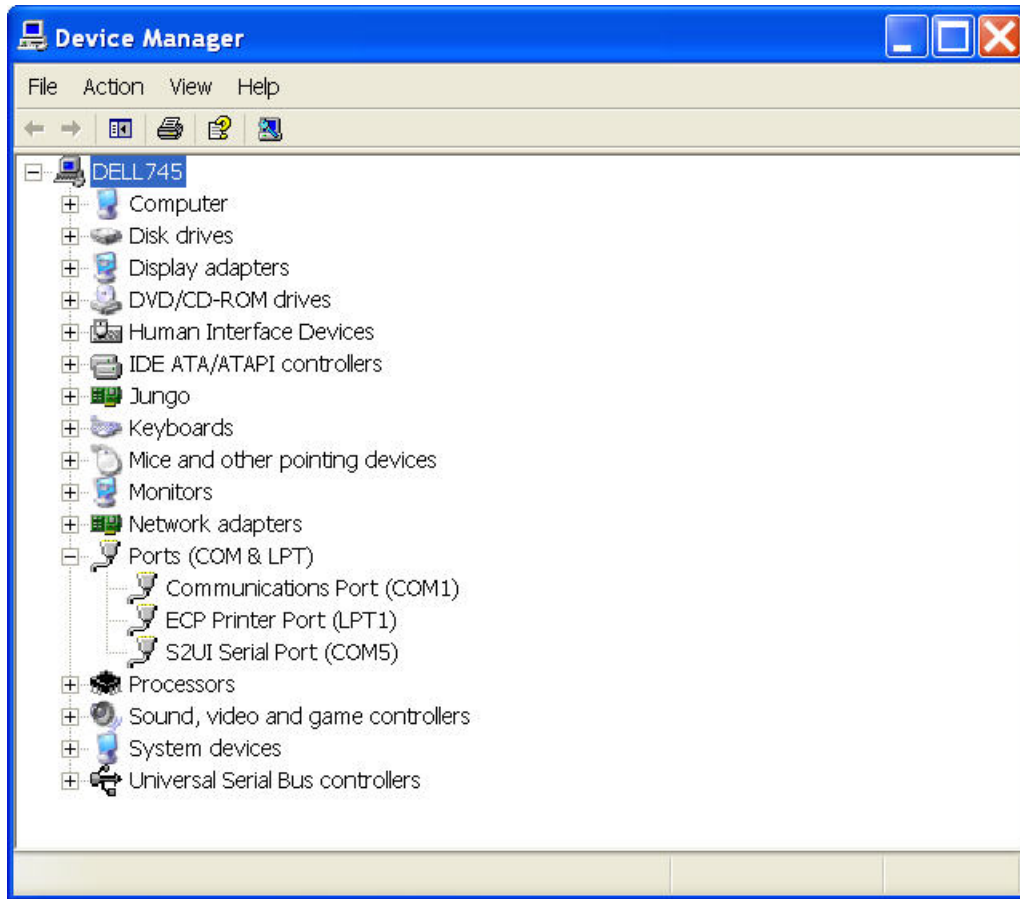
1. From the Windows Task Bar, select “Start - Settings - Control Panel”



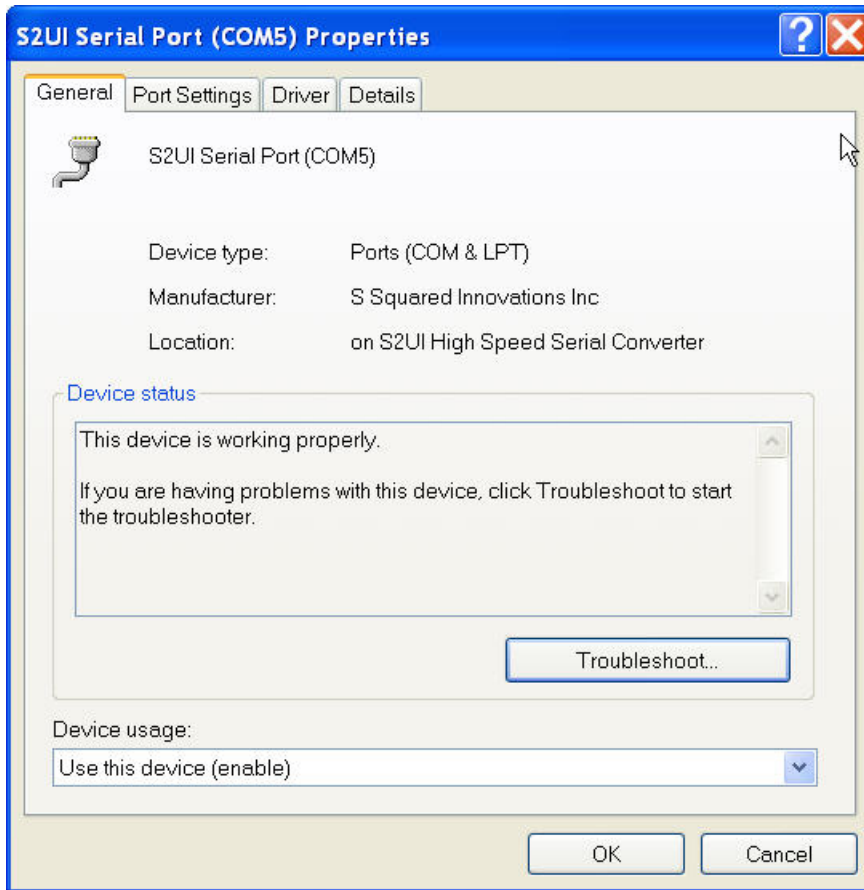
2. Double Click on the “System” Icon



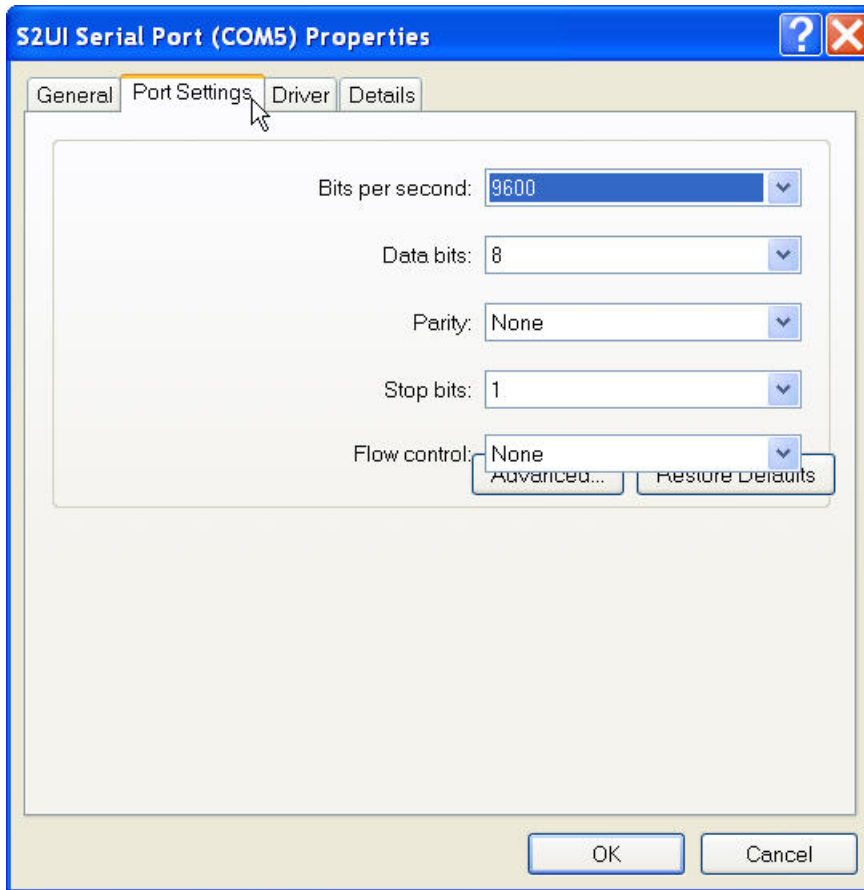
3. Select the “Hardware” Tab, and then the “Device Manager” button (see above).



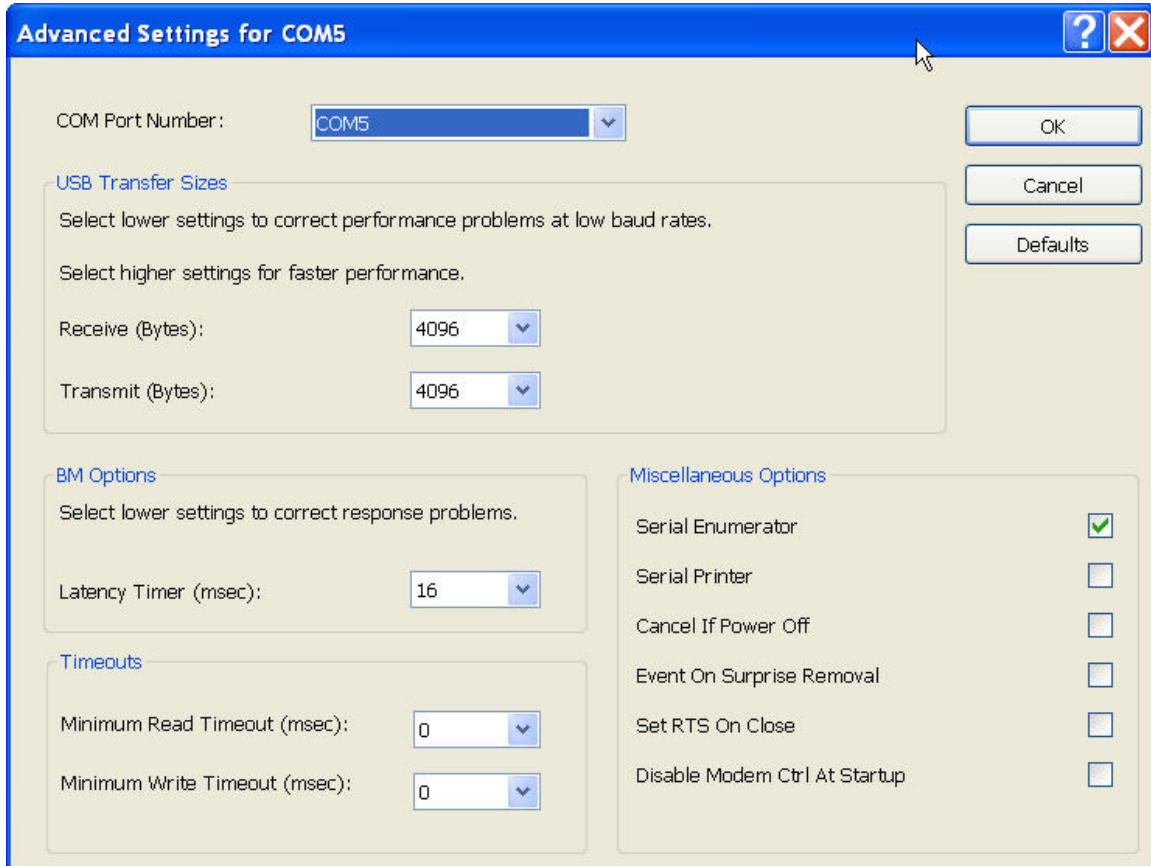
4. Locate the "S2UI Serial Port (COMx)" device in the "Ports (COM & LPT)" section. Double click the "S2UI Serial Port (COMx)" device to display its properties. You can also reveal the properties, by left-mouse selecting the item, then pressing the right-mouse button, then selecting properties.



5. Select the "Port Settings Tab"



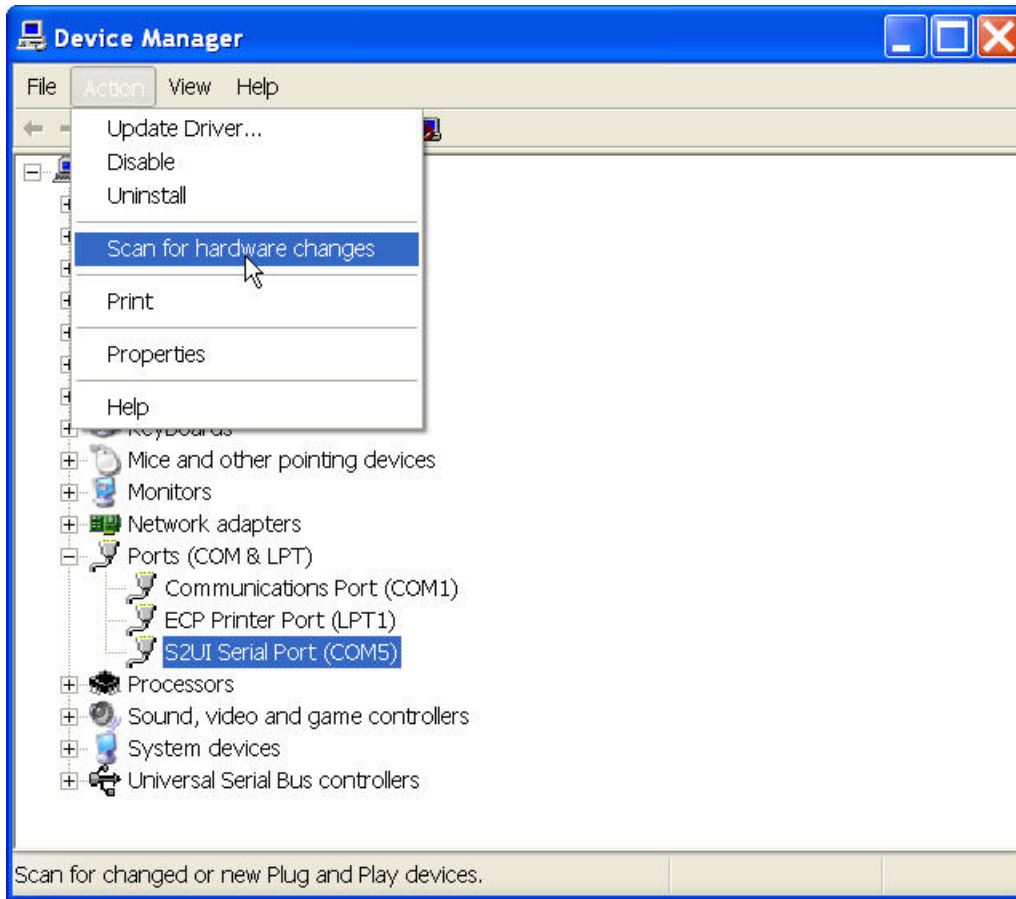
6. Now Select the "Advanced..." button



Adjust the device's COM port from the list box at the top. Depending upon your computer, some of the COM (serial) ports may be in use. Although you can force the S2UI28-N2S devices to use a "used" port, doing so may cause strange behavior in existing applications that use these ports.

Pressing "OK" in these and the other dialogs will complete the change. Restarting your computer is not necessary, as the serial port change is immediate.

To see the changes within Device Manager, select the "Action-Scan for hardware Changes" menu option



Now, you will see that the Port has been changed

You are now Done